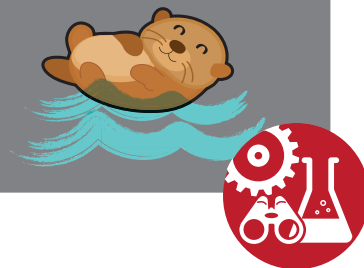


HABITAT BUILDER

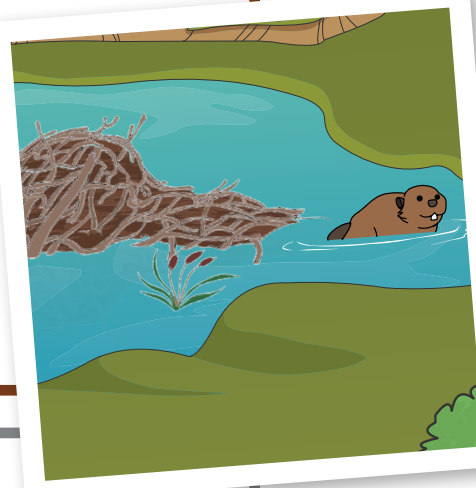
RASCAL'S RIVER Creative Expression



THE ADVENTURE:

What do you know about animal habitats and shelters? Think about different habitats – what would a shelter look like underwater, in the desert or in the arctic? Some animals live in nests or holes in a tree, others might build a den out of snow or a lodge out of wood.

Put your building skills to the test to build a life-size shelter for your Lodge or a smaller one just for you. Or, make both! Use different materials like blankets, tarps, chairs and poles to build a sturdy structure that could keep you warm and dry.



PLAN:

- Do you want to do this adventure indoors, outdoors or at camp?
- Where will you build your habitat and shelter?
- What do you need to consider when you are building your habitat? What will you need access to in your home?
- What materials will you use?
- How big will your shelter be?

DO:

- Design and build a habitat and shelter for your whole Lodge!

REVIEW:

- What do you know now that you did not know before?
- How well does your shelter protect you from the elements? Will it keep you dry? Warm? Out of the wind?
- How strong is your shelter? How can you make sure it will hold up under strong winds or heavy rain and snow?
- What other animals could live in your habitat?
- How can you use what you learned at camp?
- If you built a model habitat and shelter, how could you scale it up to make it life-size?
- What did you like about this adventure? What did you not like? How would you do this adventure differently?
- What elements of STEM were in this adventure? Science? Technology? Engineering? Mathematics?

Canadianpath.ca

the
Pond



It starts with Scouts

HABITAT BUILDER

MATERIALS:

- Cardboard boxes
- Tarps (in kit)
- Blankets
- Chairs
- Tables
- Rope
- Tent poles
- Other materials to build your shelter and habitat

ONLINE RESOURCES:

- Build an Online Habitat switchzoo.com/games/habitatgame.htm
- Draw that habitat pbskids.org/fetch/games/habitats/
- How to build a survival shelter boyslife.org/outdoors/3473/taking-shelter/comment-page-3/

SAFETY TIP:

- What should your Lodge do to stay safe while building or spending time in your shelter?
- How can you build a shelter that will not fall down when anyone is inside?
- Always have an adult nearby to help you if anything falls down.